

Inverse Functions – Part II



Preliminaries and Objectives

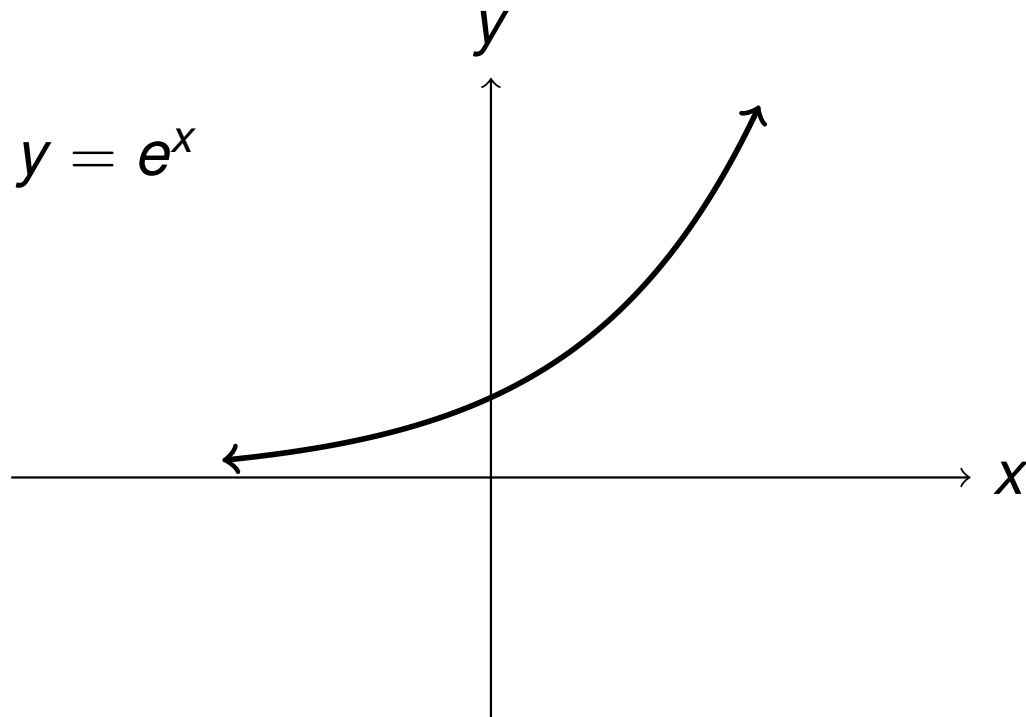
Preliminaries

- Inverse Functions
- One-to-One Functions

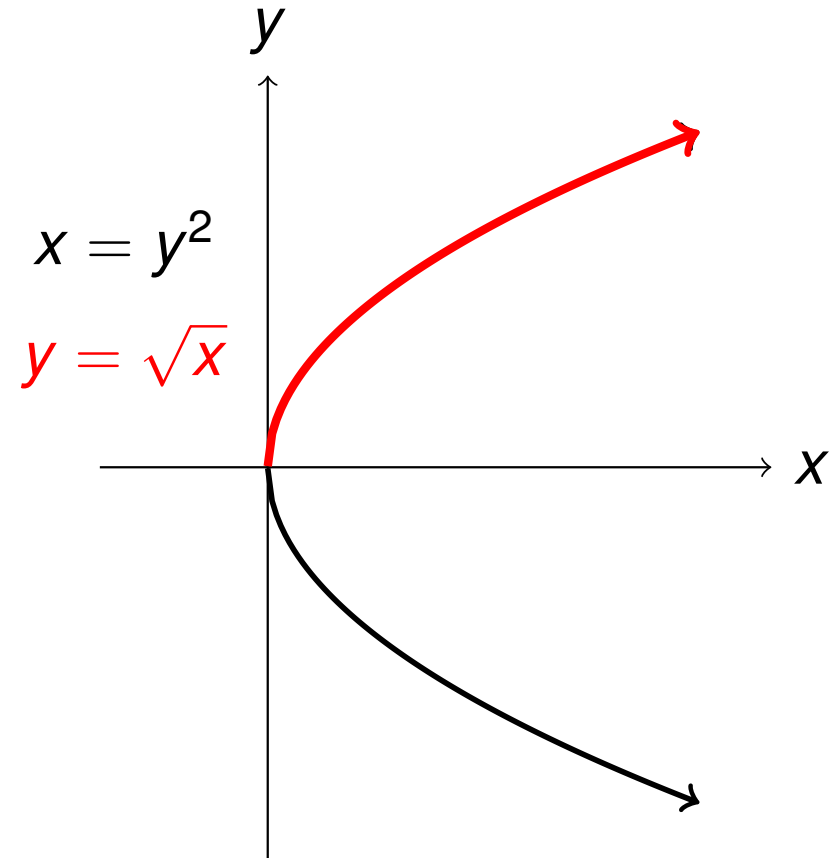
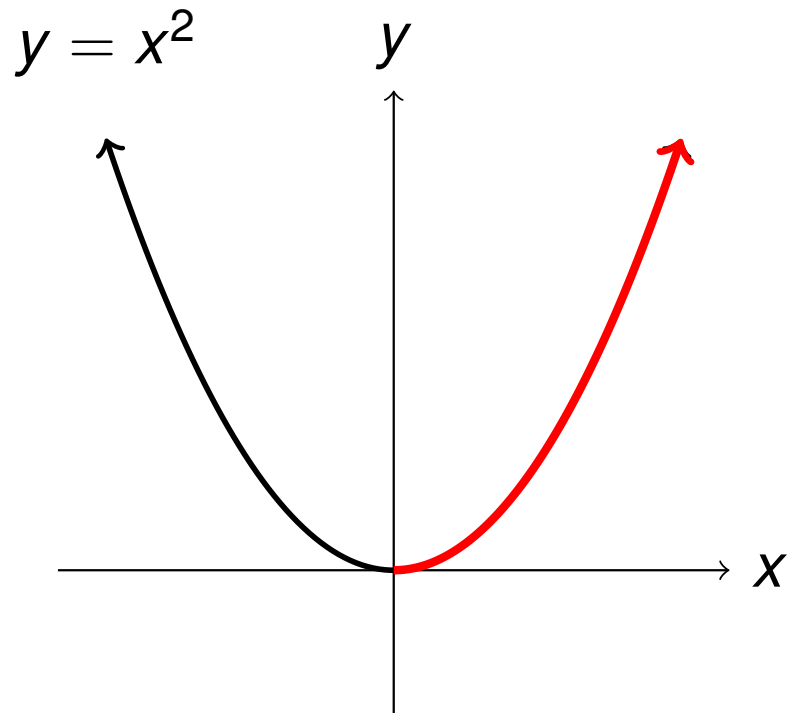
Objectives

- Define inverses for functions that are not one-to-one

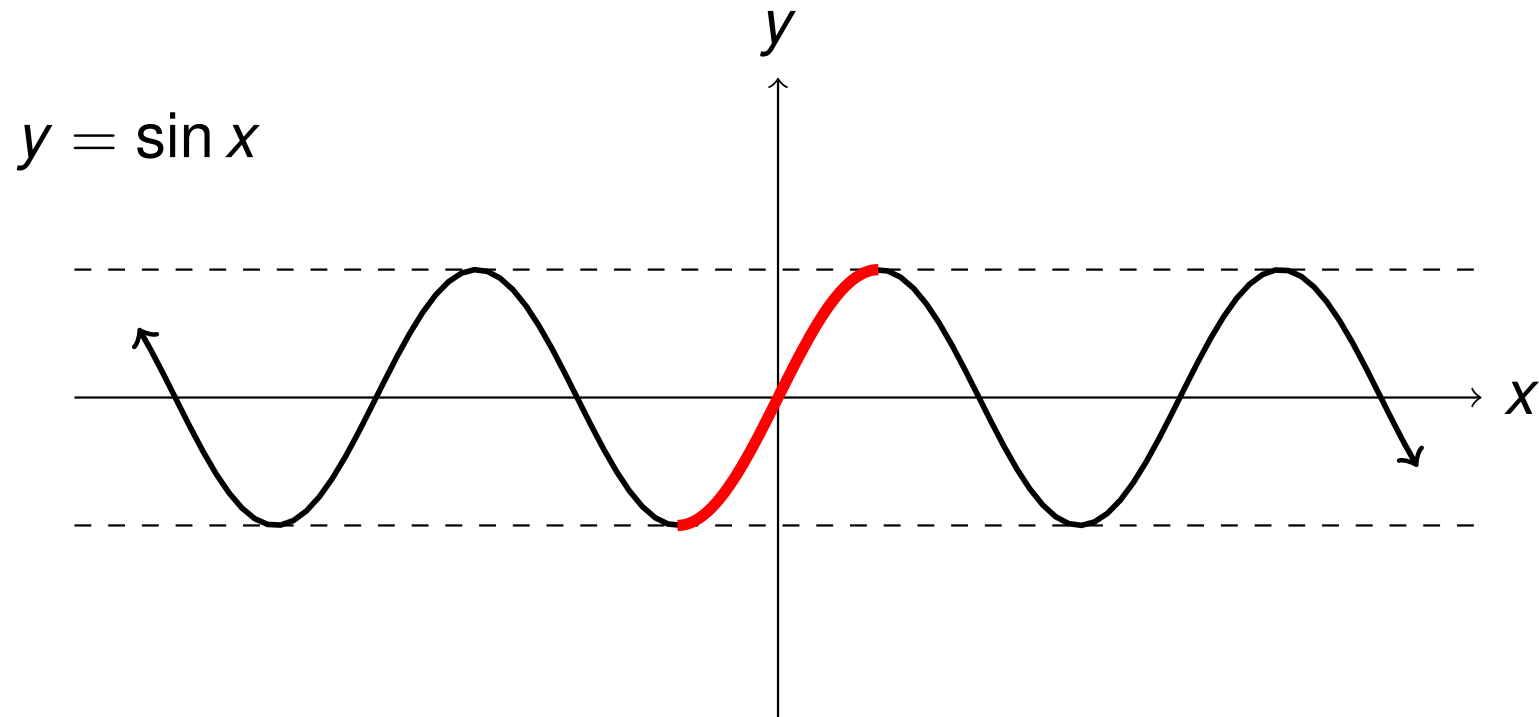
Exponential and Logarithm Function



Powers and Roots

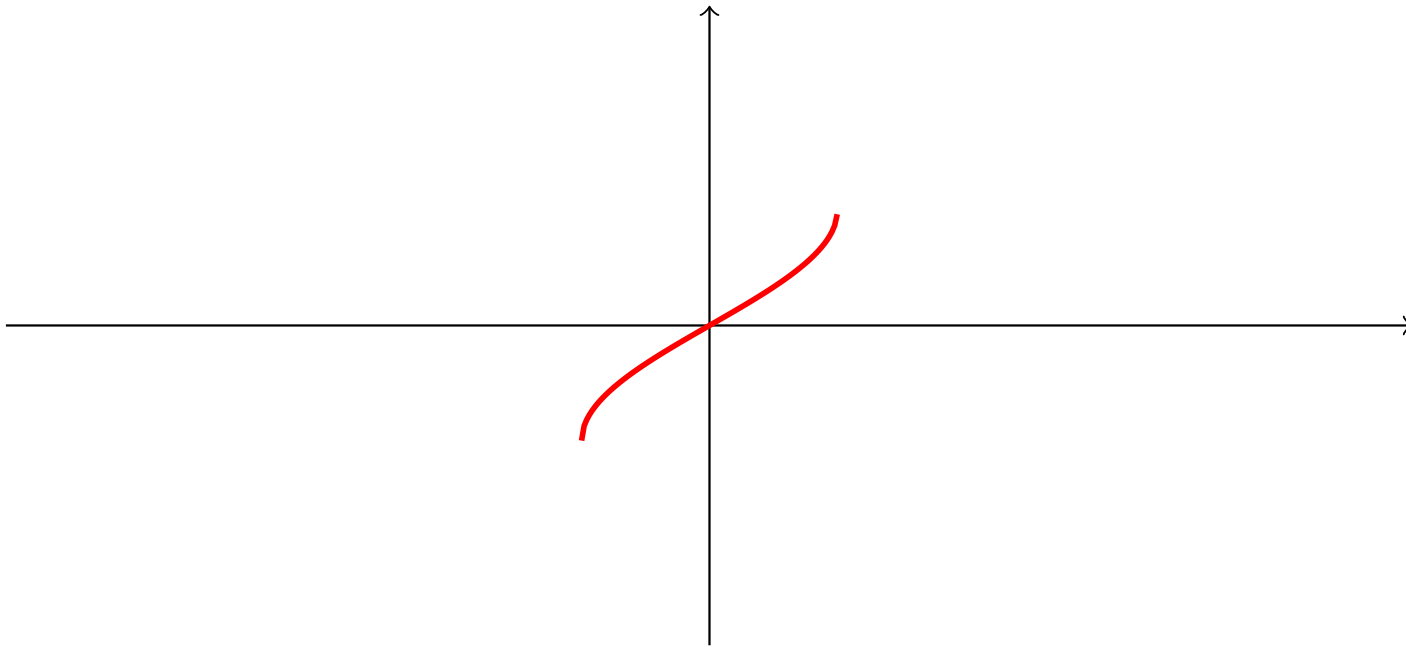


Wave Graphs



Wave Graphs

$$y = \arcsin x$$



Recap

- To find an inverse function of a one-to-one function, interchange x and y .
- If the original function is not one-to-one, restrict the domain to a portion that is one-to-one.